

Regions to boost
National Maritime
Spatial Planning

Overview of MSP in Ireland



Tom Woolley
Marine Planning Adviser
Marine Planning Policy & Legislation
Department of Housing, Local
Government & Heritage
Ireland



Co-funded by
the European Union



REGINA-MSP




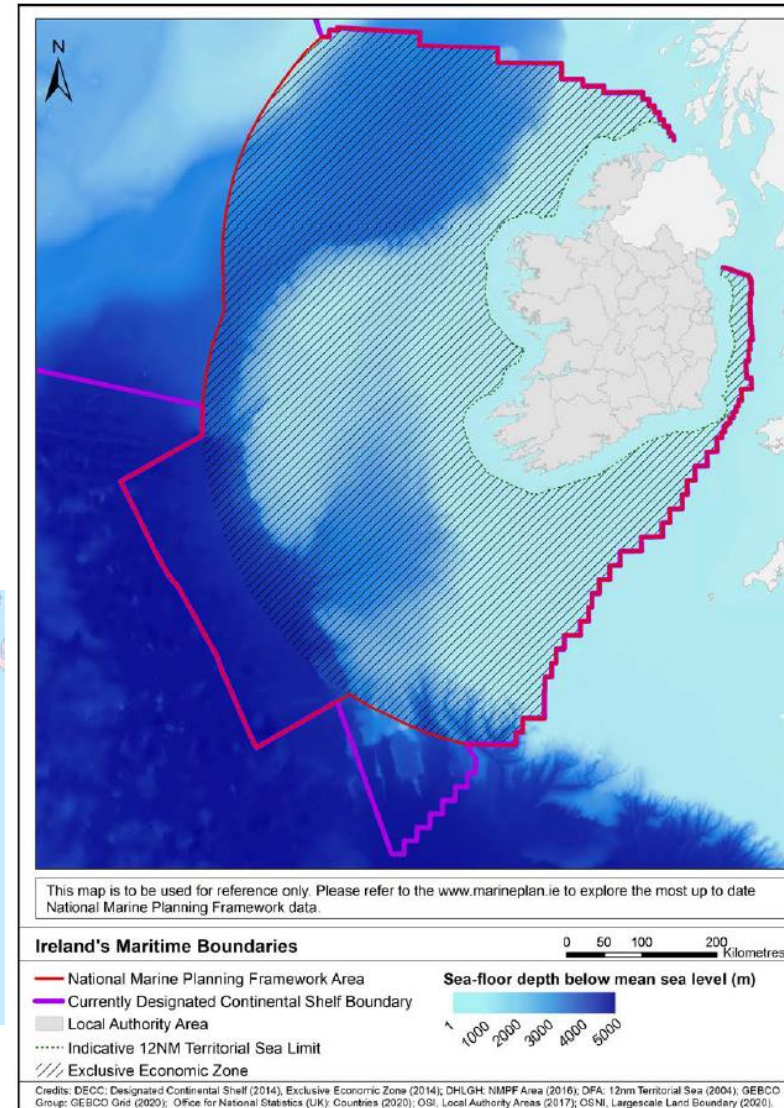
An Roinn Tithíochta,
Rialtais Áitiúil agus Oidhreachta
Department of Housing,
Local Government and Heritage

03/01/2023
Brest

Ireland's maritime area



- Area $\approx 490,000 \text{ km}^2$
- Extends from the mean high water mark at the coast seaward to in excess of 200 nautical miles in parts
- Ireland case study area for project: Mayo 
- Longest county coastline: 1,168km



Co-funded by the European Union



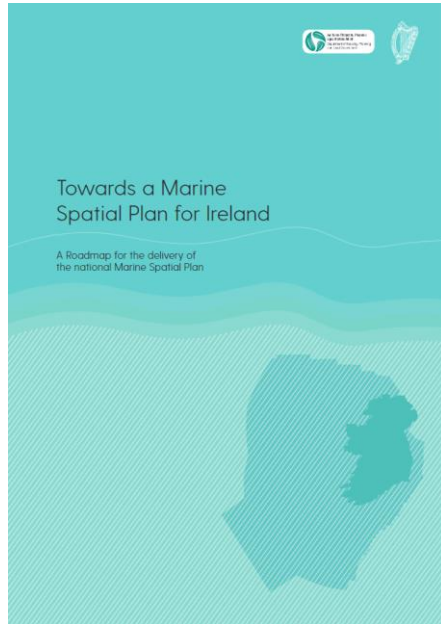
REGINA-MSP



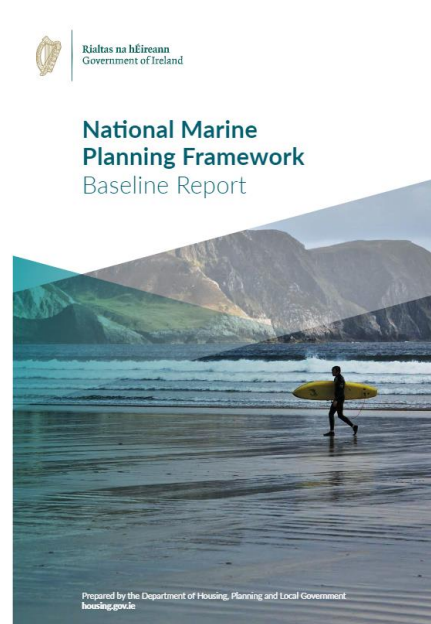
An Roinn Tithíochta,
Rialtais Áitiúil agus Oidhreacht
Department of Housing,
Local Government and Heritage



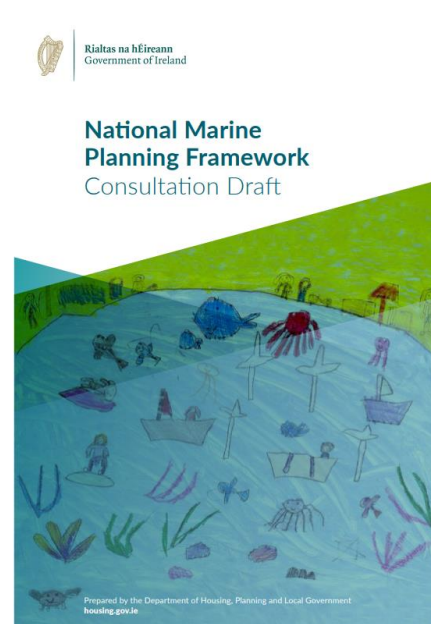
Ireland's marine plan – the National Marine Planning Framework (NMPF)



Roadmap
December
2017



Evidence base
September
2018



Draft NMPF
November
2019



Final NMPF
and launch
2021



Co-funded by
the European Union



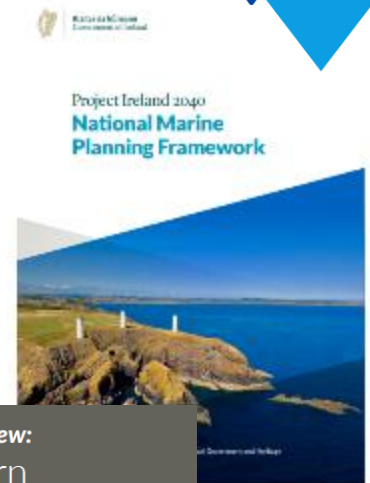
REGINA-MSP



An Roinn Tithíochta,
Rialtais Áitiúil agus Oidhreachta
Department of Housing,
Local Government and Heritage

NMPF Structure

- Two categories:
 - Overarching: Set out under three Sustainable Development Pillars i.e. **social, environmental and economic**,
 - Sectoral (16 Chapters: Aquaculture – Wastewater)
- Chapter structure:
 - Vision/Objectives
 - Planning Policies
 - Key References
 - Background Text
 - Stakeholder Stories
 - Photos
 - Maps



The NMPF – Our view:

The Southern Regional Assembly

The Southern Regional Assembly (SRA) is a regional authority with Councillors appointed from ten Local Authorities with a statutory role in regional spatial and economic planning and managing EU programmes. Through the NMPF, the integration of terrestrial and marine planning across national, regional and local tiers will drive implementation of the RSES, supporting:

- International ports, harbours, the blue economy, renewable energy and Strategic Integrated Framework Plans.
- Growth and regeneration of waterfront cities (Cork, Limerick and Waterford), networks of resilient coastal towns, rural and island communities.



REGINA-MSP



Co-funded by the European Union



An Roinn Tithíochta,
Rialtais Áitiúil agus Oidhreacht
Department of Housing,
Local Government and Heritage



Activities Map (BETA)

The map here will display marine activities. All activities are off by default and you can turn on each activity layer by clicking the eye icon. The legend for each layer is available once the layer is turned on. You can choose to turn on and off as many layers as you need but there will be slower response times when everything is turned on or very busy layers are resolving.

Please Note: The Layers and Legend lists may take a few moments to load. Some layers will not display until zoomed in (these layers appear listed in grey text until available).

Layers

- Heritage Assets
- Protected Marine Sites
- Ports, Harbours and Shipping
 - Ports of Ireland
 - Limits of Pilotage Districts
 - Popular Destination
 - Frequently Used Routes (300 gross tonnes and above)
 - National Ferry Route
 - Limits of Harbours
 - Ferry Port
 - Cargo and Tanker Vessel Density
 - Passenger Vessel Density
- Sport and Recreation
- Sea-floor and Water Column Integrity
- Seascape and Landscape
- Tourism

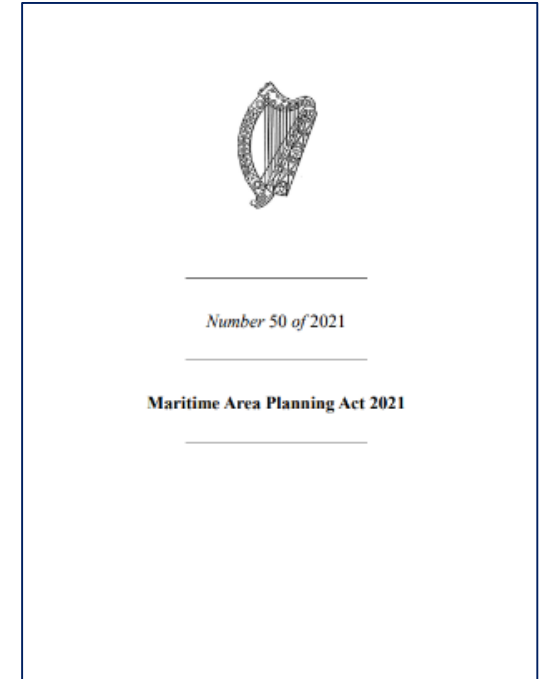
Legend



Maritime Area Planning Act 2021: Creating a Coherent Marine Planning System



- Underpins statutory marine planning including the National Marine Planning Framework (NMPF)
- Creates opportunity for **Designated Maritime Area Plans (DMAPs)**
- Creates Maritime Area Regulatory Authority (MARA)
- Changes consenting processes – new roles for MARA, **Coastal Planning Authorities** and An Bord Pleanála
- State Consent – Maritime Area Consent (MAC) – MARA
- Development Management – **CPAs** and ABP
- Licensing of activities – MARA and **CPAs**
- Enforcement – **CPAs** and MARA
- Enables creation of statutory guidance
- Creates a maritime authorisation database



REGINA-MSP

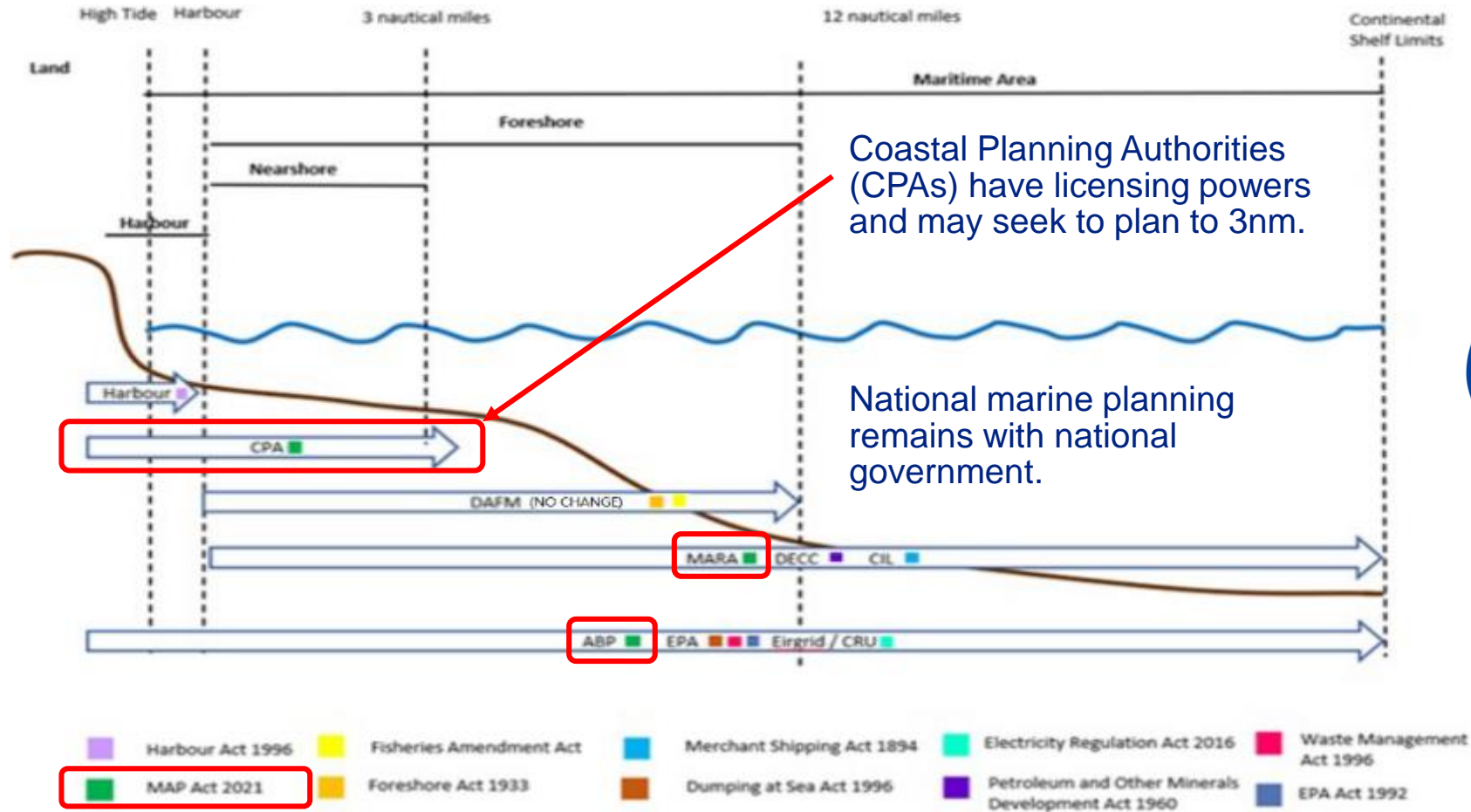


Co-funded by
the European Union



An Roinn Tithíochta,
Rialtais Áitiúil agus Oidhreachta
Department of Housing,
Local Government and Heritage

Who does what where?



Supporting Reform of Marine Management in Ireland (SRMMI)



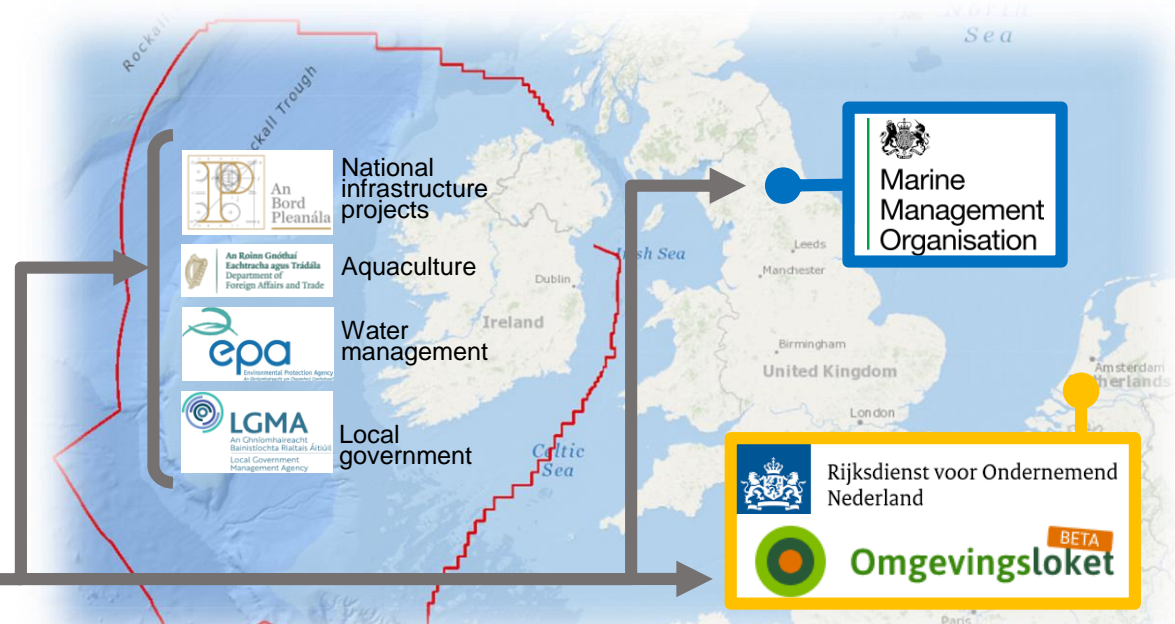
- Project under the DG REFORM Technical Support Instrument (TSI)


 This project is carried out with funding by the European Union via the Technical Support Instrument in cooperation with Directorate-General for Structural Reform Support (DG REFORM) of the European Commission

Lead beneficiary of technical support 
An Roinn Tithíochta, Rialtais Áitiúil agus Oidhreacht
 Department of Housing, Local Government and Heritage

Implemented by a consortium led by 

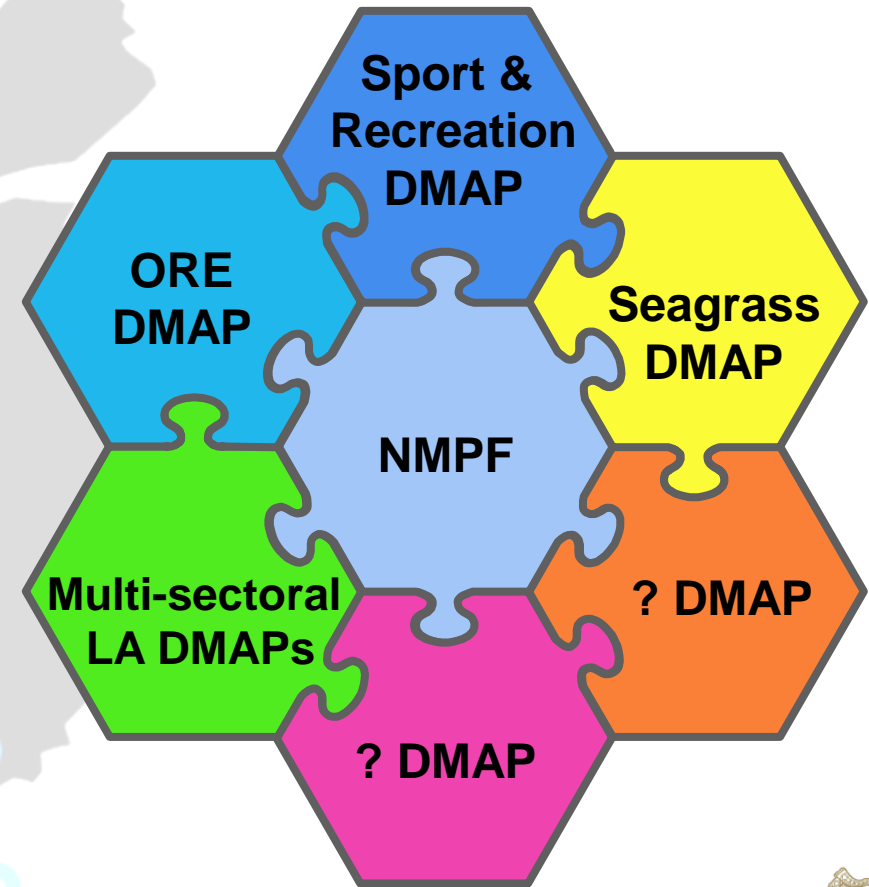
- Objective: Support the establishment of a single-point entry marine management system informed by best practice
- Outputs: Technical specifications for single-point digital marine management system; change action plans for decision-makers; capacity-building amongst all bodies involved



Designated Maritime Area Plans



- Sections 20 to 29 of the MAP Act 2021
- S.20 – Designation of Public Bodies as Competent Authorities
- S.21 – DMAP Proposals
- S.23 – Public Participation Statement
- Land plans cannot be used to identify policy in the maritime area
- Currently: Developing DMAP applicant & proposal assessment criteria



Co-funded by
the European Union



REGINA-MSP



An Roinn Tithíochta,
Rialtais Áitiúil agus Oidhreacht
Department of Housing,
Local Government and Heritage

Contacts

Thank you!

Karina Fitzgerald

Marie Duffin

REGINA-MSP

Department of Housing, Local Government and Heritage (DHLGH)

MSP@housing.gov.ie

www.marineplan.ie

 @MSP_Ireland

www.regina-msp.eu



Co-funded by
the European Union



REGINA-MSP



An Roinn Tithíochta,
Rialtais Áitiúil agus Oidhreacht
Department of Housing,
Local Government and Heritage